

The Messenger

the monthly newsletter of Mount Olive Lutheran Church

February 2012

Mount Olive
Lutheran Church
3411 South Taft Ave
Loveland, CO 80537
970-669-7350
mountolive@lveland@yahoo.com

Sunday Worship
9:00a.m.
Education Hour
10:45a.m.- 11:30a.m.

**Wednesday Evening
Worship and Bible Study**
7:00p.m.

Pastor
Rev. Mark Nierman
pr_nierman@juno.com
970- 980-5584

Visitation Pastor
Rev. John Israel
970-203-1652

Office Hours
Tuesday and Wednesday
9:00a.m. - 2:00p.m.
Friday 9:00a.m. – Noon

**Additional hours by
appointment.**

*Can we fathom
such deep mercy?*

*Do we see what
God has done?*

*Who can grasp
this great reversal:*

*Love that gives
His only Son?*

*Christ the sinless
for the sinners,*

*For the many
dies the One*

(LSB 446:4)

I Believe in Jesus Christ

Part seven in a series on the Apostles' Creed

Was crucified, died and was buried

Why was it necessary for our Savior to be true man?

Christ had to be true man in order to

- A. act in our place under the Law and fulfill it for us (active obedience);
- B. be able to suffer and die for our guilt because we failed to keep the Law (passive obedience).

Why was it necessary for our Savior to be true God?

Christ had to be true God in order that

- A. His fulfilling of the Law, His life, suffering, and death might be a sufficient ransom for all people;
- B. He might be able to overcome death and the devil for us. (From an Explanation of the Small Catechism, questions 122-123)

Jesus died on the cross. This truth is central to our Christian faith. It is a truth that is so simply and clearly expressed in Scripture that even a young child can proclaim it. Yet, it is a mystery so profound that human reason is unable to fully comprehend it. How is it that Jesus dying on the cross able to save me? Why couldn't have God saved me in some other way?

It was necessary for our salvation that someone should die in our place. Because of man's fall into sin, all mankind deserves death. It's just plain and simple, "the wages of sin is death" (Romans 6:23). God's perfect solution is to have someone else take our place. But who? It must be someone who is completely without sin so that our sin can be exchanged with his perfect righteousness. Such a person is impossible to find, for there is not one single person that is without sin. He could not be a mere human, for Romans 3:10 says, "There is no one righteous, not even one." The only one who is completely righteous and holy is God himself. He is completely without sin. But this presents another problem. God cannot die. The solution: God must become man.

It was necessary for God to become man in order that we might be saved. Only God as man could act in our place keeping all of God's law perfectly, never falling into sin. Only man is able to suffer and die. Yet the two natures of Christ were so united that the two cannot be separated. Jesus is true God and true man. Whatever happens to Jesus as man, is also true of Jesus as God. If Jesus suffered, God suffered, because Jesus is fully God. So also, if Jesus died, God died, for Jesus is fully God.

What? God died? How can this be? This mystery is impossible to fathom. Yet faith confesses it to be true. The Solid Declaration quotes Luther saying:

We Christians should know that if God is not in the scale to give it weight, we, on our side, sink to the ground. I mean it this way: if it cannot be said that God died for us, but only a man, we are lost; but if God's dead and a dead God lie in the balance, His side goes down and ours goes up like a light and empty scale. Yet he can also readily go up again, or leap out of the scale! But he could not sit on the scale unless He became a man like us, so that it could be called God's dying, God's martyrdom, God's blood, and God's death. For God in his own nature cannot die; but now that God and man are united in one person, it is called God's death when the man dies who is one substance or one person with God. (SD VII, 44)

The joy of knowing that God died for us is knowing that God had the power to overcome death and the devil for us. It is with great joy we proclaim, "Jesus died on the cross!"

In Christ, Pastor Mark Nierman



Highlights of the January 22, 2012 Voters Meeting

After enjoying an excellent potluck lunch, the voters heard reports from Pastor Nierman, Pastor Israel, the Treasurer, our Circuit Forum delegates (Pastor Nierman and Larry Currey), and all of the administrative boards.

The voters took the following actions.

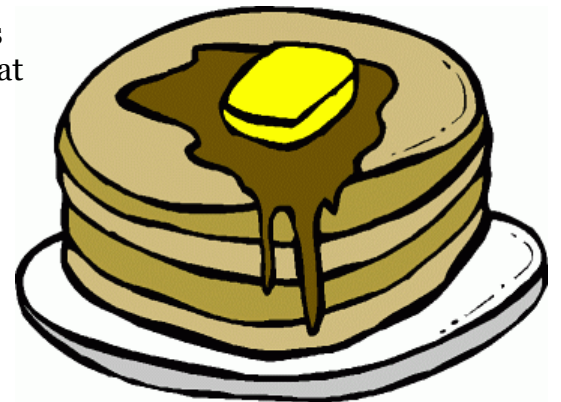
- Approved an initiative by the Board of Evangelism and Public Relations to support the prison ministry by placing a clothing collection box sponsored by the “72 Hour Fund” on our property.
- Decided to disburse the remainder of the funds received through the LCEF promotion as a gift to LCMS missionary Rev. Jonathon Muhly.
- In joyful response to the Lord’s abundant blessings, we decided to increase Mount Olive’s first fruits giving in support of the Rocky Mountain District to 10% of contributions received in the month of December 2011. As a result, we have exceeded our commitment for 2011. Thanks be to God!
- Elected Larry Currey as Mt. Olive’s lay delegate and Bryce Hedstrom as Mt. Olive’s alternate lay delegate to the Rocky Mountain District Convention, June 7-9, 2012.
- Nominated Rev. Allen Anderson to the office of District President and Rev. Gary Piepkorn to the office of District First Vice President.

Shrove Tuesday Pancakes “Let them eat . . .pancakes!”

Yes, that is what Mount Olive Lutheran Church will be doing to celebrate Shrove Tuesday on Feb. 21st at 5:00 pm.

Shrove Tuesday (also known as Mardi Gras) is the Tuesday before the season of Lent. To Shrove is to confess one’s sins. The season of Lent is a time of penitential reflection from Ash Wednesday until Easter Sunday. Centuries ago, fasting was often a part of one’s Lenten observance and people needed to quickly use any fattening meats, butter, eggs, or milk before lent. One very easy way to do this was to make pancakes.

Fasting during lent is not required in the Lutheran Church. This is simply an evening of fun and fellowship at Mount Olive. Starting at 5pm we will be serving plenty of pancakes, sausage and bacon. Those who want to can also join in pancake races and other fun activities. **Everyone is welcome to join us. Invite a friend! There is no cost for the meal, but all donations are greatly appreciated. This event is being sponsored by the youth of the congregation. If you plan on attending...please sign up on the clipboard underneath the calendar. THANK YOU!**



ASH WEDNESDAY IS FEBRUARY 23RD

Worship services will be held each Wednesday during Lent at 4:30pm and 7:00pm.
Supper will be served between the services.

Please consider hosting a meal and/or signing up to provide a dessert.
Sign up sheets are posted on the SERVANT BOARD in the back of the fellowship hall.

- We are looking for groups/boards/families to HOST the 6 Lenten Suppers. Supper is served between services from 5:00- 6:30pm.
- Suppers should be simple, inexpensive and easy to prepare. The Host provides the meal for approximately 50 people. They also set up and clean up.
- Congregation members are encouraged to provide desserts on the sign up sheet. Desserts should be at the church no later than 4:15 pm on Wednesday.



Mark your Calendars!

Please save the date for the seventh-annual
**Our Lutheran Faith Lay Theological
Conference: Saturday, February 18, 2012.**

We are privileged to have as our speaker this year Pastor Jared Melius, pastor of Mount Zion Lutheran Church in Denver, CO He will be speaking on the topic of Heaven & Hell.

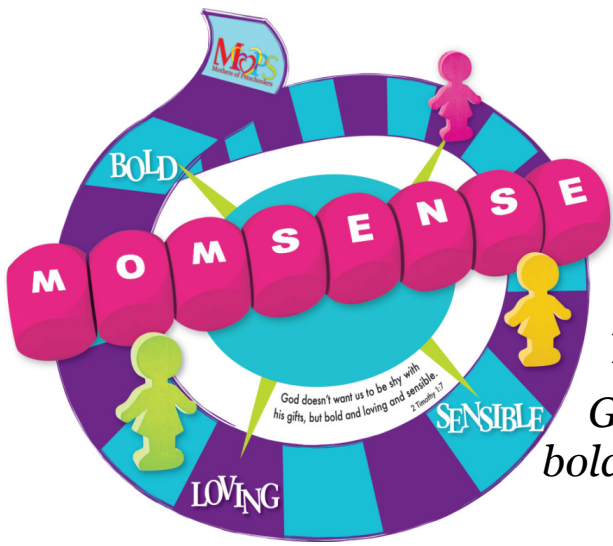
**Peace With Christ Lutheran Church, Fort Collins,
1412 W. Swallow Road. (970) 226-4721.**

**As in previous years, the conference will begin with
the service of Matins and end with Vespers.
Lunch is provided. Babysitting is available.**

A book and resource table will offer interesting resources for purchase. If you have any particular titles that you are interested in seeing (or genres), please pass those along to our contact person below and he will get them to our book table guy, Paul.

One change for 2012: The economy has finally caught up with our conference. **This will be the first year we will ask for a suggested donation of \$10 to help defray costs of the conference. This is only suggested, however.** Please plan on attending whether this works into your budget or not. **Lunch is free (no free-will offering will be collected).** In the past, our only source of income has been donations from churches involved in the planning of the conference and an occasional Thrivent grant. As church budgets have tightened, fewer churches can afford that donation. We appreciate your understanding and help!

For more information and to RSVP (for lunch count), please contact: Micah Lile at micahlile@yahoo.com, or (970) 356-2206 Please plan on joining us!



Mothers of young children, infancy through preschool, are invited to join MOPS@ Mount Olive.

Join us for a year of learning to be BOLD, LOVING, and SENSIBLE moms in the game.

God doesn't want us to be shy with his gifts, but bold and loving and sensible. 2 Timothy 1:7

February 1st

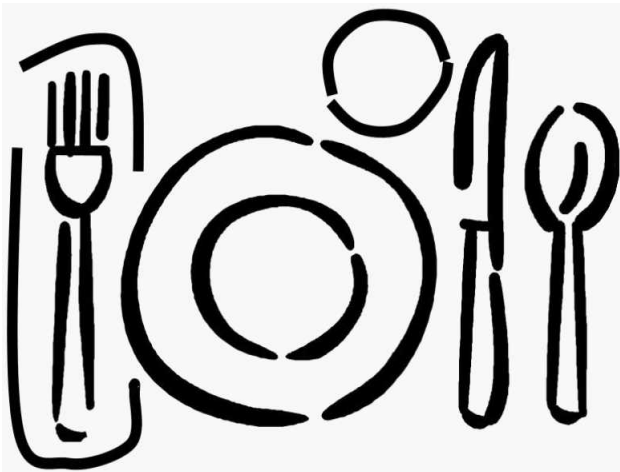
9:15-11:15am

- **Craft Day!**
Bring 6 4x6's of your favorite family photos and we will be turning them into a block puzzle!

February 15th

9:15 -11:15am

- **Sequence:**
Cathy from Life Choices will be speaking about what their organization does for moms in our community by being bold, loving, and sensible!



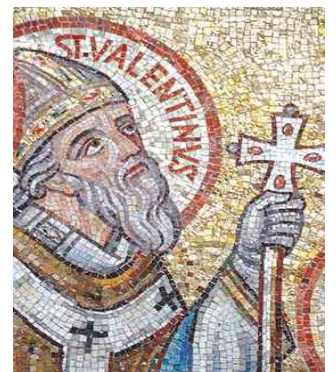
Mount Olive Dinner Club

Join the fun and become better acquainted with members of your church family!

Check the sign-up sheet and add your name. This is for singles or couples. We usually form groups of 7 or 8 people per round. Each hosts one time deciding and usually serving the entree. Host suggests to the others in their group a salad, side dish or dessert. After everyone in the group has had the opportunity to host new groups are formed. This is all very informal and stretches out over many months. For additional information contact anyone on your Fellowship Board.

sday, February 9th at Noon for a
by Pat and Vi DeGooyer.

program
and others with a Musical Twist"
Larry and Jean Currey



Greetings from your friends at the Lutheran Church Extension Fund

January 2012

As the new year gets underway, I want to thank you for your ministry partnership and assure you that Lutheran Church Extension Fund (LCEF) remains a vital resource for the Lutheran Church—Missouri Synod (LCMS).

We are blessed with over 90,000 investors, providing the needed resources so that we may offer loans and services to ministries seeking to share the Gospel in communities throughout the world. YOU are the enabler for the work of LCEF—a fund that now exceeds \$1.8 billion!

Clearly there are significant issues hampering our nation's economic recovery, including those related to the financial health of foreign countries. As we watch and monitor these issues, be assured your investments are at work for our Lord. Despite the challenges, God's work in his kingdom is never-ending and requires resources for expansion. Just last year, LCEF provided \$147 million in new loans—and we are tracking to make loans at the same level this year as well.

LCEF remains a well-capitalized organization with a prudent approach to balancing loans and investments with liquidity requirements. This task has been both a challenge and an opportunity.

With God's blessings, LCEF loan customers are committed to their obligations. LCEF's district and national staffs provide caring attention to those ministries that face financial challenges. Meeting ministry needs and financial

requirements is the essence of LCEF. God has provided us direction, along with the commitment and passion of many servant leaders at LCEF.

As an organization, we are exploring ways to be an even-greater financial resource to LCMS organizations. You have seen us develop services for stewardship education, energy efficiency upgrades, volunteer mobilization and school marketing. We are in the process of expanding resources as we seek to become the "choice" organization within the LCMS for financial-related support. In addition, we are working with other LCMS entities, such as Concordia Plan Services and The LCMS Foundation to discover efficiencies by bundling our combined resources. We plan to improve technology offerings that allow investors options in managing their investments. By no means will we eliminate the personal service that is currently offered; rather we will enhance it through technology. We intend to do all of this by maintaining the current fee structure (which is minimal).

On behalf of the national and district LCEF teams, thank you for your commitment to our ministry. To learn more about our products and the ministry impact resulting from your support, please go to www.lcef.org. We look forward to serving you better in 2012 and beyond, as together we support LCMS ministries that share the Gospel and bring people to salvation, by strengthening their relationship with their Savior, Jesus Christ.

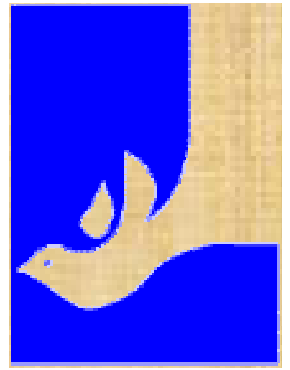
Wishing you God's richest blessings,

Richard C. Robertson
President/ CEO



LUTHERANS FOR LIFE

Equipping Lutherans to be Gospel-motivated voices For Life!



The Third Smallest Baby Ever!

This event seemed exciting enough to make national news a few days ago. It was the birth of a baby weighing only 9 ounces and when held would fit into an adult male's hand. This baby was born prematurely at 24 weeks of development and raises this question: what is a baby like at this stage of development? The following information was gleaned from a brochure entitled "Watch Me Grow" published by Little One Publishing, LLC.

"I'm here! - At the moment the nuclei of the father's sperm and mother's egg unite a new and unrepeatable human being comes into the world, complete with his or her own unique set of DNA. The new little person's sex is determined from the beginning."

"Month 1 - I'm tiny." I've grown up to 10,000 times my size at conception. My heart has begun to beat.

"Month 2 - I'm two inches!" I can suck my thumb. My baby teeth, fingers and toes are developing. You can see my ears, nose, lips, and tongue. You can record my brain waves. My nervous system is functioning and forty sets of muscles are beginning their first exercises. By eight weeks all my body systems are present.

"Month 3 - I grabbed my hand!" I can now squint, swallow, and move my tongue. I have fingernails and toenails and my own fingerprints. I breathe the amniotic fluid to strengthen my respiratory system.

"Month 4 - I had a dream!" My taste buds are working. My hair, eyebrows, and eyelashes are growing. You can record my REMs (rapid eye movements). This means I'm dreaming.

"Month 5 - Mommy felt me kick!" I'm half way to my birth and very active. My mommy can feel when I stretch or kick. If I were born now I could survive.

"Month 6 - I'm sitting up straight now!" My oil and sweat glands are functioning. I can respond to sound. My lungs are fairly well developed.

"Month 7 - I can look around!" I'm now using all four senses. My eyelids open and close, and my eyes look around. I can hear, taste, touch, cough, yawn, and hiccup.

"Month 8 - I like to listen to my Mommy's voice!" I am continuing to gain weight and developing a layer of fat to keep me warm after I'm born.

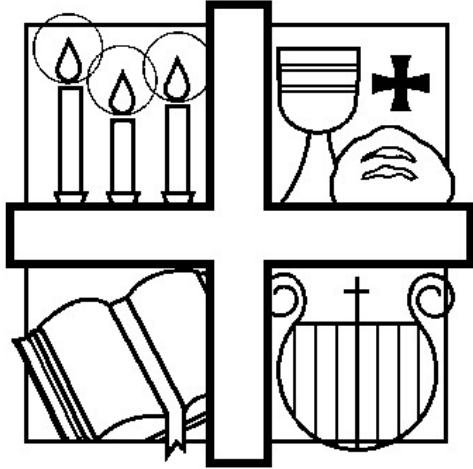
"Month 9" My lungs are now fully developed. I'm shifting my head down getting ready to be born.

Birth - "Here I am!"

The baby spoken of in the news would have been developed through month six. We join the Psalmist in the words of Psalm 139:14: "I praise you, for I am fearfully and wonderfully made."

If you would like more detailed information, the brochure "Watch Me Grow" is available in the tract rack in the fellowship hall.

Lutheran Worship: 2000 and Beyond



Written by Dr. A.L. Barry, former President,
Lutheran Church-Missouri Synod
for a presentation to the
Real Life Worship Conference
Sponsored by the
LCMS Commission on Worship
in Denver, Colorado February 1998.

Thesis II Lutheran Worship Is Christ-Centered

If the main purpose of Lutheran worship is to receive God's gifts, then it follows that Lutheran worship is Christ-centered. Just take a look at the liturgical orders of service in either of our two hymnals. Everything said and done is filled with His Word. Why? Because our focus is on Christ and His work, that's why. The focus of Lutheran worship is on Christ, not man. Therefore, Lutheran worship is always Christocentric (Christ-centered) and never anthropocentric (man-centered).

The Christ-centered nature of Lutheran worship has direct impact on every other aspect of our worship services. We hear His word read and preached. The hymns sung in our services give Him the glory, honor and praise. We spend a great deal of time singing His praises, and less time singing about our own personal spiritual experiences. With the focus on Christ, we notice that even the art in the church portrays the great saving events of our Lord's life and ministry and the great events of God's saving work among His people. Lutheran worship takes our eyes and sets them firmly on the cross of Jesus Christ, for there the Lord of the Universe suffered and died for the sins of the world. Lutheran worship points us to the Resurrected Lord who lives and reigns to all eternity, and promises us everlasting life. Christ-

centered Lutheran worship lifts our hearts and minds to the things of God and helps us to understand our place in Christ's kingdom better as His redeemed people. Yes, Lutheran worship must always be Christ-centered.

When we say Lutheran worship is Christ-centered, this is not to say that those who gather for worship are mere blocks of stone. Our worship focuses on Christ, who is present for us and with us in His Word and Sacraments. He is truly among us. We are not contemplating a far-off Christ, or meditating on abstract ideas. Lutheran worship is not like going to a self-help group or a therapy session. It is God who gathers us for worship around the gifts He gives to us through Word and Sacrament. We are worshipping the One who is very near, as close as the preaching of the Word. We are worshipping the One who is actually present under the bread and wine of Holy Communion. He promised, "I will be with you always." In our worship service He fulfills that wonderful promise. He is living and active among us, right here, right now, where He has promised to be-in His Word and Sacraments. Therefore, it is important to say that while our focus is on Christ, His focus is always on us! Thanks be to God that this is true!

Be sure to check out the March newsletter for Thesis Three!



Members of Mount Olive, You are Invited...

The members of Peace With Christ, Fort Collins and member/tour Host Harry Krueckeberg invite you to join them on a 12 day trip to Germany for an "In the Footsteps of Martin Luther" tour, September 30 through October 11.

This tour will include visits to numerous sites related to the life and times of Dr. Martin Luther, such as Erfurt, Wittenberg, Eisleben, and Eisenach. In addition, the tour will visit several sites related to the life and times of C.F.W. Walther, the first President of what is now the

Missouri Synod. Additional sites include the Frauenkirche in Dresden, and a Rhine River cruise at the end for the wind-down of the trip.

To assist in making the tour more comfortable, arrangements have been made for multiple night stays at several locations, for example, two nights in Erfurt, five nights in Leipzig with one day bus tours to several of the sites and two nights in Rudesheim.

Travel to Germany at that time of the year is pleasant, the company of fellow Lutherans should be enjoyable and the experiences related to Dr. Martin Luther and C.F.W. Walther should be a blessing to all of us.

The deadline for registering is May 28. You are asked to send the registration and the deposit check (made out to CETA Tours) to Harry Krueckeberg prior to May 28.

For costs, answers to your questions and a brochure with the complete itinerary and registration forms, please contact: **Harry F. Krueckeberg 970-613-0676 or harkru@lamar.colostate.edu**

News and Notes from our



Groups

Mount Olive Ladies Guild will meet on Tuesday, February 21, at 9 AM, in the lower level.

Hostess will be Mary Hoel. Doris Riewe will lead the devotion: "Love Letter to God, Our First Love". Jan Bloss will lead the Bible Study: "Lavish Blessings", Winter Quarterly, pg. 18. Jan Bloss will lead the Mite Box Devotion. All ladies of the congregation are invited for a time of fellowship, prayer, Bible study, Mite/Offering collection and a short business meeting. Contact Joyce Flanscha for more information. Guests are always welcome. Come, find out what the Lutheran Women's Missionary League is all about.

WINGS Please join us on Thursday, February 23rd at 7:00pm. We will be continuing our Bible study on the Lord's Prayer and discussing upcoming events. Please see Laura Burrill for more information. All women are invited to attend and dessert and coffee will be served.

Save the Date for the 2012 Northern Zone Spring Workshop!

Our theme will be "Love Endures" based on Ephesians 5:2 and

Adriane Dorr, Managing Editor of the Lutheran Witness will be our main speaker.

We are in need of lots of help for this wonderful event as we are expecting over 100 ladies to attend!

Please consider helping out with set up, serving in the kitchen and clean up.

Look for more details to come in the bulletin and the March Newsletter.

If you are able to serve as Coffee Hosts sign up on the Servant Bulletin Board.

If you have questions about serving, please call the office for more details!

Coffee Hosts

February 5 th	Mount Olive Youth
February 12 th	Chris and Sonia Rosenberger
February 19 th	Jack and Jan Bloss
February 26 th	



Elder Schedule

February 1st	Larry Currey
February 5th	Neil Hughes & Brian Fischer
February 8th	Rick Pfeiffer
February 12th	Dan Daggett
February 15th	Rick Pfeiffer
February 19th	Larry Currey & Dan Daggett
February 22nd	4:30pm Rick Pfeiffer 7:00 pm Larry Currey
February 26th	Neil Hughes
February 29th	4:30pm Rick Pfeiffer 7:00pm Brian Fischer

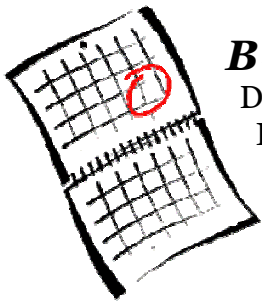


Altar Guild

Joyce Flanscha and
Lynette Ford

Usher Schedule

February 5th	Ron Hildahl, Jerry Layne, Darrell Viegut, Conrad Brandt
February 12th	Brian Fischer, Bob Stamp, Dan Flanscha, Stephen Flanscha
February 19th	Rick Pfeiffer, Jack Bloss, Dan Daggett, Ken Lahrke
February 22nd	4:30pm Jack Bloss 7:00pm Jerry Layne
February 26th	Brian Burrill, Scott Zweifel, Bryce Hedstrom, Monte Wegner
February 29th	4:30pm Darrell Viegut 7:00pm Brian Burrill



BULLETIN AND NEWSLETTER SUBMISSIONS

Do you have an announcement for the weekly bulletin or the Mount Olive Messenger?
Please submit your information to Laura in the church office by email at mountoliveohio@yahoo.com.

- ✓ **Bulletin information is needed by Wednesdays.**
- ✓ **Newsletter submissions no later than the 20th of each month.**

February Birthdays

February 1	Pauline Hartman
February 1	Guy Schaefer
February 2	Jerry Layne
February 2	Alec Swartwout
February 3	Monique Hopkins
February 4	Cassandra Benedetti
February 7	Mary Mullaney
February 7	Jim Randall
February 9	Shannon Brown
February 10	Laura Moore
February 11	Christina Stamp
February 13	Jan Bloss
February 13	Laura Burrill
February 13	Lauren Lahrke
February 13	Cori Morrill
February 14	Billy Meggenberg
February 16	Ann Allee
February 18	Tina Newton
February 19	Judy Luce
February 20	John Laaker
February 21	Spencer Brown
February 22	Aedan Kaplan
February 23	Dale Ekart
February 23	Bill Meinecke
February 23	Rick Pfeiffer
February 24	Evelyn Stephens
February 25	Benjamin Flanscha
February 25	Beth Glassmeyer

February Anniversaries

February 13
Larry and Claudette Dassow

February 14
Virgil and Bea Roeder

February 17
Duayne and Bea Nusbaum

February 18
Dennie and Connie Thompson

February 29
George and Julie Matern

You know you're a Lutheran when:

*It's 100 degrees, with 90% humidity, and you still have coffee after the service

*You hear something really funny during the sermon and smile as loudly as you can

*Donuts are a line item in the church budget, just like coffee

*The communion cabinet is open to all, but the coffee cabinet is locked up tight

Sunday	Monday	Tuesday	Wednesday	Thursday	Friday	Saturday
<div style="border: 1px solid black; padding: 10px; width: fit-content; margin: auto;"> <h1 style="margin: 0;">February 2012</h1> <h2 style="margin: 0;">Mount Olive Calendar</h2> </div>			1 6:30am Men's Bible Study 9:15am MOPS@ Mount Olive 7pm Worship & Bible Study	2	3	4 8am Weavers 9:45 am Young Adult Bible Study @ the Niermans
5 Mite Box Sunday 8am Choir Practice 9 am Holy Communion 10:30am Bible Class/SS	6	7 6pm Board of Evangelism/PR 7pm Elders, Board of Fellowship	8 6:30am Men's Bible Study 7pm Worship & Bible Study	9 Noon Keenagers	10	11 10am Bridal Shower for Briece Burrill 1 pm Pinochle
12 8am Choir Practice 9 am Worship Service 10:30am Bible Class/SS	13 1pm Bunco 12 Group	14 HOST WINKEL 7pm Board of Education, Stewardship, Trustees 7:15pm Board of Youth	15 6:30am Men's Bible Study 9:15am MOPS@ Mount Olive 7pm Worship & Bible Study	16	17	18 9:45 am Young Adult Bible Study @ the Niermans Lay Theological Conference @PWC
19 8am Choir Practice 9 am Holy Communion 10:30am Bible Class/SS	20	21 9am Ladies Guild 5:00 pm Shrove Tuesday Pancake Supper	22 Ash Wednesday 6:30am Men's Bible Study 4:30/7pm – Ash Wednesday Service 5:00-6:30 Supper	23 7pm WINGS	24	25 9:45 am Young Adult Bible Study @ the Niermans
26 8am Choir Practice 9 am Worship Service 10:30am Bible Class/SS	27	28 6pm Men's Night Out	29 6:30am Men's Bible Study 4:30/7pm Lenten Service 5:00-6:30 Supper			